

FIELDS OF GOLD (Sting)

Trascrizione a cura di: Nicola Bruno

BASS

Measures 1-5: Bass clef, key signature of two sharps (F# and C#), 4/4 time signature. The piece begins with a whole rest in measure 1, followed by a repeat sign. Measures 2-5 contain a rhythmic pattern of quarter notes with eighth rests, ascending from G2 to D3.

Measures 6-9: Continuation of the rhythmic pattern. Measure 8 includes a double bar line with a slash through it, indicating a measure rest.

Measures 10-13: Continuation of the rhythmic pattern, ending with a half note D3 in measure 13.

Measures 14-17: Continuation of the rhythmic pattern, ending with a half note D3 in measure 17.

Measures 18-21: Continuation of the rhythmic pattern, ending with a half note D3 in measure 21.

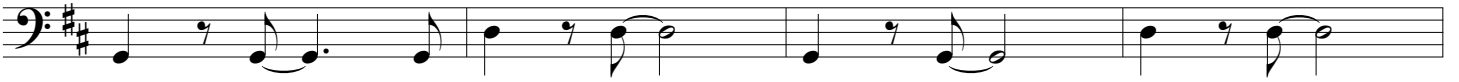
Measures 22-25: Continuation of the rhythmic pattern. Measure 25 ends with a repeat sign.

Measures 26-30: Continuation of the rhythmic pattern. Measure 28 includes a double bar line with a slash through it, indicating a measure rest.

Measures 31-35: Continuation of the rhythmic pattern. Measure 35 ends with a double bar line and repeat sign. A first ending bracket labeled '1.' spans measures 31-35.

Measures 36-40: Continuation of the rhythmic pattern. Measure 39 includes a double bar line with a slash through it, indicating a measure rest. A second ending bracket labeled '2.' spans measures 36-40.

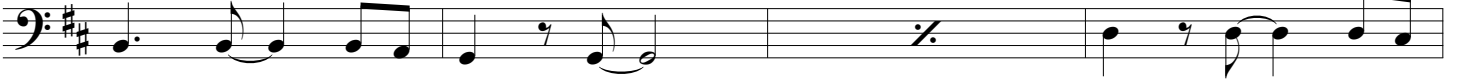
40



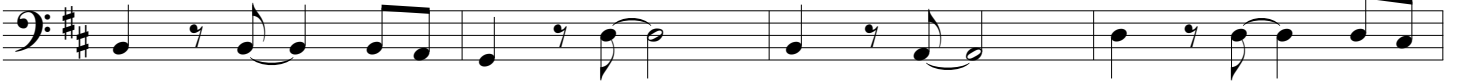
44



49



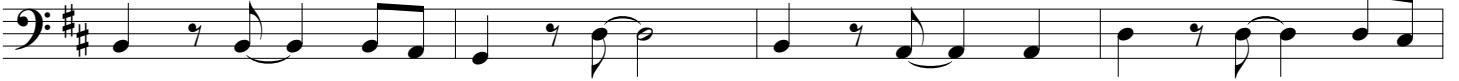
53



57



61



65



69



75

